

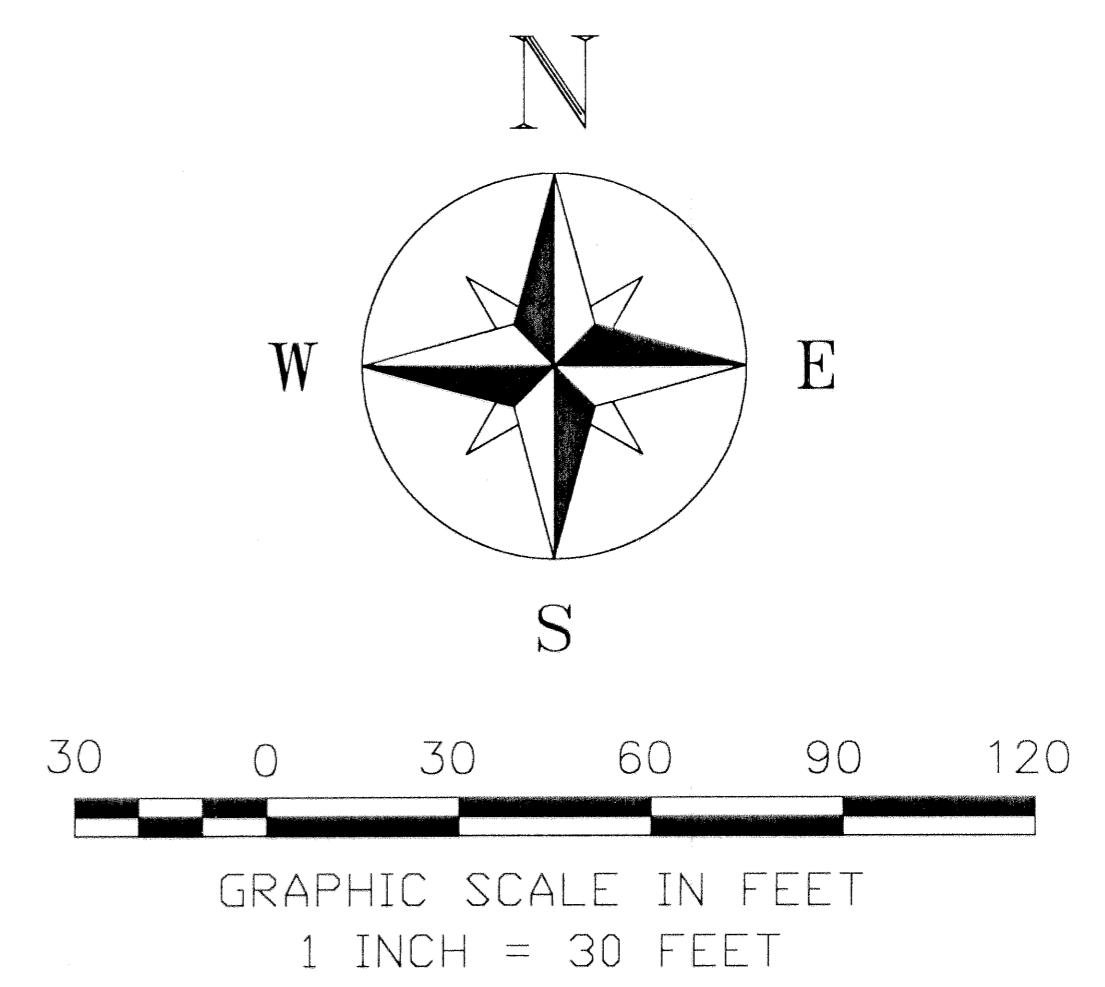
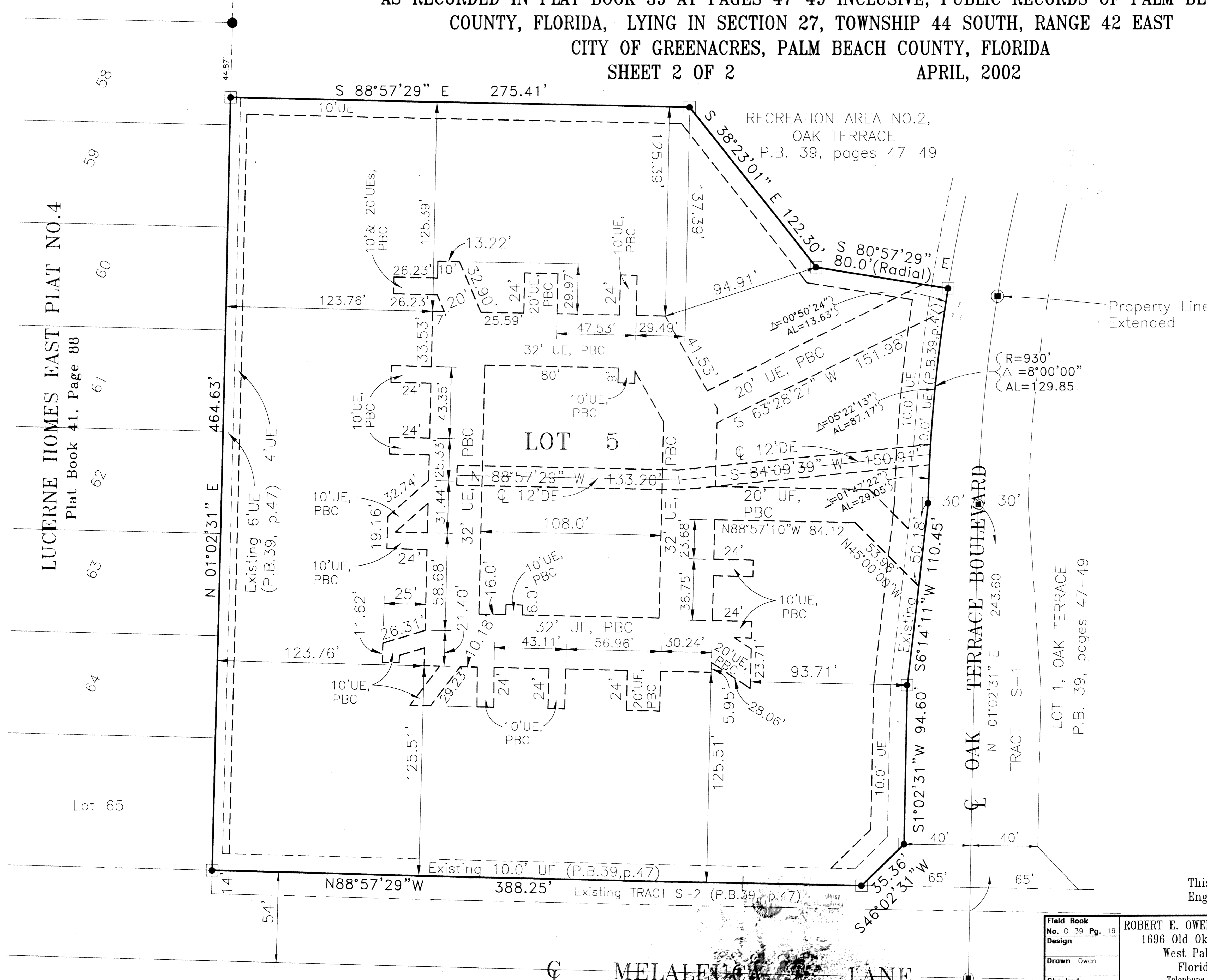
OAK TERRACE LOT 5, REPLAT

171

A RESIDENTIAL PLANNED UNIT DEVELOPMENT (P.U.D.)
 BEING A PORTION OF OAK TERRACE P.U.D., BEING A REPLAT OF LOT 5 OF OAK TERRACE
 AS RECORDED IN PLAT BOOK 39 AT PAGES 47-49 INCLUSIVE, PUBLIC RECORDS OF PALM BEACH
 COUNTY, FLORIDA, LYING IN SECTION 27, TOWNSHIP 44 SOUTH, RANGE 42 EAST
 CITY OF GREENACRES, PALM BEACH COUNTY, FLORIDA

SHEET 2 OF 2

APRIL, 2002



LEGEND:

- AL = Arc Length
- △ = Central Angle
- DE = Drainage Easement
- FD = Found
- = Fd Rod or Pipe
- ⊙ = FD SS(Ship Spike)
- P.B. = Plat Book
- PRM = Permanent Reference Monument
- ⊠ = PRM #LS3978
- R = Radius
- UE = Utility Easement
- UE,PBC = Utility Easement, Palm Beach County

This instrument was prepared by Robert E. Owen, Robert E. Owen Engineers, Inc. 1696 Old Okeechobee Road, West Palm Beach, Florida.

Field Book No. 0-39 Pg. 19	ROBERT E. OWEN ENGINEERS, INC. 1696 Old Okeechobee Road West Palm Beach, Florida 33409 Telephone 561-687-0446 00005644	OAK TERRACE, LOT 5 REPLAT City of Greenacres Palm Beach County, Florida	Job No. 00-1012 Scale 1" = 30' Date Dec., 2001 Sheet 2 of 2 File No. BF-2299A
Design Owen	Checked Shepherd Breitenbach	Field Matthes	Approved

MELALEUCA LANE

LUCERNE HOMES EAST PLAT NO.4
Plat Book 41, Page 88

58

59

60

61

62

63

64

Lot 65